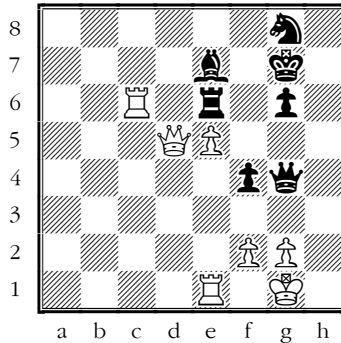


Test Yourself!

M. Brodsky (2518) – J. Degraeve (2553)
 25th Open Cappelle la Grande FRA 2009



(Can you punish White for the careless
 47.Rc7-c6??)



World Chess News

Linares

Alexander Grischuk still retains the lead in spite of his loss to Magnus Carlsen, who has joined Vassily Ivanchuk in second place.

Round 12 results:

Carlsen – Grischuk 1-0
 Anand – Ivanchuk ½-½
 Aronian – Wang Yue ½-½
 Radjabov – Dominguez ½-½

Standings after 12 rounds:

1. Grischuk – 7
 2-3. Carlsen and Ivanchuk – 6½
 4-5. Anand and Aronian – 6
 6-7. Wang Yue and Radjabov – 5½
 8. Dominguez – 5

Round 13 pairings:

Grischuk – Wang Yue
 Radjabov – Ivanchuk
 Carlsen – Dominguez
 Anand – Aronian

[Official website](#)

European Men's Ch. Budva, Montenegro

This event begins today. There are 2 players above 2700 and 64 above 2600. Here is the top-20 from the starting list. The defending champion is Sergey Tiviakov (NED).

1.	Francisco Vallejo Pons	ESP	2702
2.	Vladimir Akopian	ARM	2700
3.	Arkadij Naiditsch	GER	2693
4.	Vladimir Malakhov	RUS	2692
5.	Alexey Dreev	RUS	2688
6.	Viktor Bologan	MDA	2687
7.	Nikita Vitiugov	RUS	2687
8.	Sergei Tiviakov	NED	2685
9.	Ivan Cheparinov	BUL	2679
10.	Alexander Motylev	RUS	2676
11.	Liviu-Dieter Nisipeanu	ROU	2675
12.	Alexander Areshchenko	UKR	2673
13.	Artyom Timofeev	RUS	2671
14.	Andrei Volokitin	UKR	2671
15.	Baadur Jobava	GEO	2669
16.	Laurent Fressinet	FRA	2666
17.	Evgeny Tomashevsky	RUS	2664
18.	Gadir Guseinov	AZE	2661
19.	Ivan Sokolov	NED	2657
20.	Ernesto Inarkiev	RUS	2656

[Official website](#)

European Women's Ch. St. Petersburg, Russia

This event begins tomorrow. Here is the top-10 from the starting list. The defending champion is Kateryna Lahno (UKR).

1.	IM Anna Muzychuk	SLO	2540
2.	GM Nana Dzagnidze	GEO	2518
3.	IM Ketevan Arakhamia-Grant	SCO	2500
4.	IM Anna Ushenina	UKR	2499
5.	IM Tatiana Kosintseva	RUS	2497
6.	WGM Natalia Zhukova	UKR	2490
7.	GM Kateryna Lahno	UKR	2488
8.	IM Nadezhda Kosintseva	RUS	2486
9.	GM HoangThanh Trang	HUN	2483
10.	WGM Natalia Pogonina	RUS	2467

[Official website](#)

Istanbul

The first tournament of the Women's Grand Prix Series begins today. 7 players, who are "men" grandmasters and among those six from the World women top-10, are participating.

1.GM Koneru Humpy	IND	2621
2.GM Hou Yifan	CHN	2571
3.GM Antoaneta Stefanova	BUL	2557
4.GM Pia Cramling	SWE	2548
5.GM Marie Sebag	FRA	2529
6.GM Maia Chiburdanidze	GEO	2516
7.GM Zhao Xue	CHN	2508
8.IM Elina Danielian	ARM	2496
9.WGM Shen Yang	CHN	2448
10.IM Martha Fierro	ECU	2403
11.WGM Zeinab Mamedjarova	AZE	2362
12.WIM Betül Cemre Yıldız	TUR	2214

[Official website](#)

Cappelle la Grande

Round 7 top results:

Leon Hoyos (5) – Vovk (5½) 0–1
Degraeve (5) – Gordon (5) ½–½
O.Danielian (5) – Dzhumayev (5) 0–1

Round 8 top pairings:

Vovk (6½) – Dzhumayev (6)
Gordon (5½) – Gelashvili (5½)
Salgado Lopez (5½) – Hammer (5½)
Sveshnikov (5½) – Degraeve (5½)
Miroshnichenko (5) – Rychagov (5½)

[Official website](#)

Kutin's Protest Letter to Ilyumzhinov

The following letter by the ECU President, Boris Kutin, was [published](#) at ChessDom.com.

Letter to FIDE President Kirsan Ilyumzhinov

FIDE President
Mr Kirsan Ilyumzhinov
9 Siggrou Avenue
11743 Athens, Greece

27 February 2009

Dear Mr President,

First of all accept my apology being absent for the second time in my more than ten years capacity of member of the Board (that time I was in the hospital). I cannot be with you due to my obligations in Europe. Exactly at the same time is the opening ceremony of European Women's Championship in St. Petersburg.

More important (and more painful) is the clash with the very first FIDE Grand Prix tournament for women. There are only a few woman/s strong tournaments per year and the two strongest ones should be played at the same time?

I was told that at the closing ceremony of the very first Ataturk memorial last year it was announced that the tournament would keep the day around 8 March. Is this correct to Belgrade organizers who already organize the WGM tournament for almost 50 years and many times that the tournament was absolutely the strongest in the world?

But this is not my main point. Even Belgrade's traditional tournament is a private one, it is not an official FIDE event. In our case we have two extremely important FIDE events (European Championship is a qualification for the World Championship) at the same time. We have announced our date at the Dresden Olympiad and FIDE decided to go with Women's Grand Prix without a single phone call to us.

Unfortunately this is not the end of the story. The Second Women's Grand Prix will be in Nanjing, China, exactly at the same time as the European Club Cup. You know very well this event is the second strongest team event, immediately after the Olympiad, with more than 200 GMs from all continents. For many clubs (especially top ones) this will cause big damage. For sure for some players will be in breach of contract.

Really I have no comment, remembering the situation in last October, having a clash with World Mind Games and European Club Cup.

Dear Mr. President, in such way we are loosing our credibility – both, FIDE and ECU.

And one, not so important story, but still important for me: in beginning of February I called our office, asking if the date of PB is already known. I got the answer that Mr. Raycsanyi is still hoping to organize the meeting in Budapest, but chances are not too good. In such situation I offered my help and asked for FIDE demands. The answer in written form was very shortly: 25 rooms with full board and 25.000 Euro for the tickets. In a very short time I did not get any confirmation from Croatia (City of Rijeka). I was not surprised hearing a few days after that Board will be in Istanbul, but I was very surprised that the host covers just accommodation. How is this possible Mr. President?

With best wishes for good work and best regards,
Boris Kutin
Continental President for Europe



**ICCF & FIDE GM
Arno Nickel
Clinches Simon
Webb Memorial!**

With 3 games remaining in this very strong 13-player ICCF international memorial (ICCF category 15) in memory of the late GM Simon Webb of England, who was killed by his son in 2005, ICCF & FIDE GM **Arno Nickel** of Germany has clinched first place with 8½/12. GMs Roman Chtilek (Czech Republic) and Raymond Bolger (Norway) are currently tied for 2nd with 7½ points. GM Wolfram Schön (Canada) currently with 5½ points and two games still open has a chance to tie for second as well. All completed games to date are included in today's database.

Current [cross-table](#) standings.

Annotated Game

By GM Ruslan Sherbakov

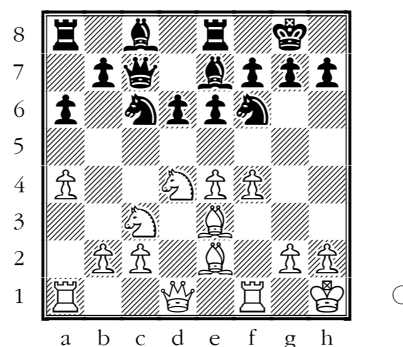
White: M. Carlsen (2776)

Black: A. Grischuk (2733)

XXVI SuperGM Linares ESP (12),
05.03.2009

Sicilian Defense - [B84]

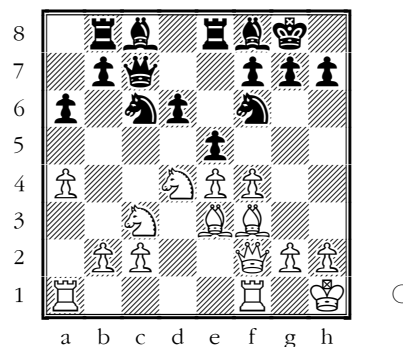
1.e4 c5 2.♘f3 d6 3.d4 cxd4 4.♗xd4 ♗f6 5.♗c3 a6 6.♕e2 e6 7.0-0 ♖e7 8.a4 ♗c6 9.♕e3 0-0 10.f4 ♖c7 11.♖h1 ♗e8 (D)



This has almost become the initial position of the Scheveningen Variation.

12.♕f3 ♕f8 12...♖b8 is the most popular continuation; while Black also plays 12...♕d7, 12...♗a5 and 12...♗xd4
13.♖d2 ♖b8 13...♗a5 has been tried many times with complicated play after 14.♖f2 (perhaps the restrained 14.b3!? is also promising) 14...♗c4 15.♕c1 e5 16.♗de2 d5! 17.fxe5 ♗xe5 18.♕f4 (or 18.exd5 ♗xf3 19.♖xf3 ♕g4 20.♖g3 ♖ac8 with good play) 18...dxe4 19.♗xe4 and so on, as, for example, in the game Sutovsky – Kasparov, Tel Aviv 1998.

14.♖f2 e5 (D)



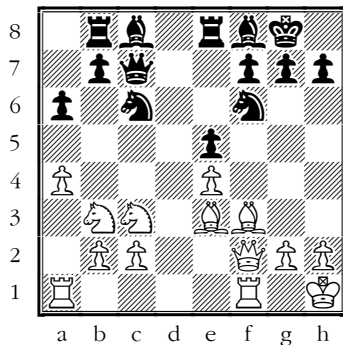
Magnus has already played this position before. In the game Carlsen – Anand, Wijk aan Zee 2008 he faced 14...♕d7 15.g4 e5 16.♗f5 exf4 17.♕xf4

♖e6 18.♞ad1 ♜e5 19.♙xe5 (19.g5!? ♜fd7 20.♙g2 ♜b6∞) 19...dxe5 20.g5 ♜d7 21.♙d5 ♞c6∞ and Black has achieved good play and eventually scored the full point. Obviously, he prepared some improvement.

15.fxe5!? A novelty. White used to play 15.♜de2 and one of those players was Grischuk himself! 15...b5 (after 15...exf4 16.♙b6 ♞e7 17.♜xf4 White has obtained the better chances in the game Adams – Anand, Linares 2005) 16.axb5 axb5 17.f5 ♜b4 18.♙g3 and here in the game Grischuk – Rublevsky, Candidates Elista 2007 a draw was agreed. Then the discussion continued in the game Jakovenko – Rublevsky, Poikovsky 2008: 18...♜xc2! 19.♙g5!? (19.♞xc2 b4⇌) 19...♜xa1 20.♙xf6 ♞c5 21.♞d2 ♜b3 22.♞g5 h6 23.♞g4 g6 24.♙d5 ♜d4 25.♙g5! ♞xd5 26.exd5 ♙xf5 27.♜xf5 gxf5 28.♞h5 hxg5 29.♙e4! ♙g7 30.♙xf5 ♜xf5 31.♞xf5± and White has achieved good winning chances. However, Black's play would have certainly been improved.

15...dxe5 The logical alternative 15...dxe5 could have promised some active options for White after 16.♞g3

16.♜b3 (D)

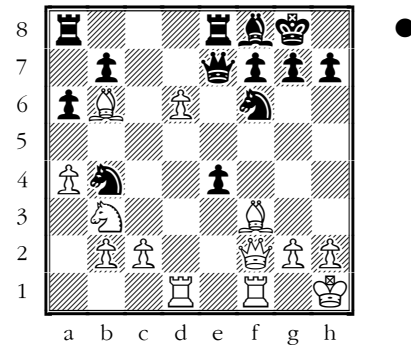


16...♜b4 16...♙e6!? deserved serious attention, not being worried about 17.♙b6 ♞c8 18.♙d5 ♙xd5 19.exd5 ♜b4 20.c3 e4 (or 20...♜d3!? 21.♞d2 ♜c5) 21.cxb4 exf3 22.♞xf3 ♞d7∞ with good play.

17.♙a7 ♞a8 18.♙b6 ♞e7 19.♞ad1 ♙e6

Perhaps not the best. 19...♙g4 looked rather solid although White still kept somewhat better chances after 20.♙xg4 ♜xg4 21.♞g3 (21.♞f5 ♞e6 22.♞d7 ♞xf5 23.♞xf5 ♞e7∞) 21...♜f6 22.♜c5 ♞ac8 23.a5 ♞c6 24.♞d2±

20.♙d5 ♙xd5 21.exd5 e4 22.d6! (D)

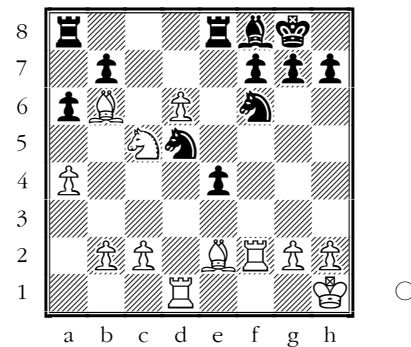


A strong intermediate move – White's d–passer is becoming powerful.

22...♞e6

22...♞e5!? seemed more tenacious: 23.d7 ♜xd7 24.♞xd7 exf3 25.♞xf3 f6 with a worse, but defensible position after (25...♞e7 26.♞xb7) 26.♜d4±

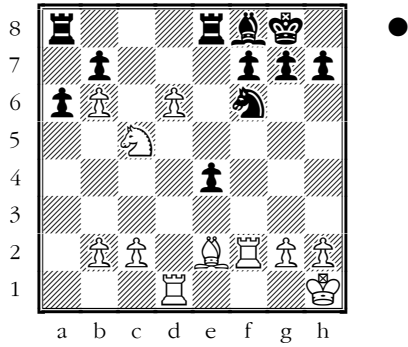
23.♜c5 ♞f5 24.♙e2 ♞xf2 25.♞xf2 ♜bd5 (D)



26.a5?!

A logical continuation, but not the best 26.d7 ♞eb8 27.♞xf6 ♜xf6 28.♜xe4 ♜xe4 29.d8♞ ♞xd8 30.♞xd8 ♞xd8 31.♙xd8 could have led to the better endgame for White; but perhaps the most promising way was an immediate exchange sacrifice by 26.♞xf6! ♜xf6 (in case of 26...♜xb6 27.♞ff1 Black couldn't defend his queen-side, for example, 27...♞ad8 28.a5 ♞xd6 29.♞xd6 ♙xd6 30.♜xb7 ♜c8 31.♙xa6+-) 27.b4 (27.a5!?) 27...e3 (or 27...♞e5 28.♜xb7 ♞d5 29.♞xd5 ♜xd5 30.♙c5 ♜f6 31.a5 ♜d7 32.♙d4±) 28.♞g1 g6 29.a5 and it was very difficult for Black to defend his queen-side.

26...♜xb6 27.axb6 (D)



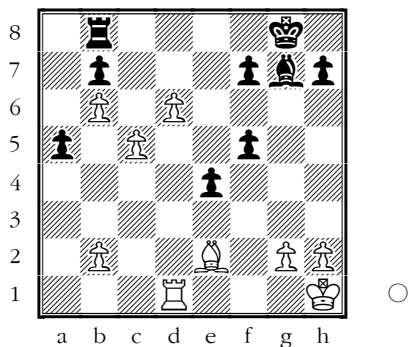
27...♖ab8? In common severe time-trouble for Grischuk he returns the favour. After the correct 27...♖ec8! Black would be successfully defending although White still have kept a small advantage: 28.b4 (or 28.♗xb7 ♖xc2 29.g3 ♗d7∞) 28...♖c6 29.d7 ♗xc5 30.d8♖+ ♖xd8+ ♗f8 32.♗xa6! ♖xb6 33.♗c4 ♖xb4 34.♗b3± and so on.

28.♖xf6! This capture is asking to be played, but the follow-up should have been foreseen.

28...gxf6 29.♗d7 f5 30.c4 a5 Removing the pawn from the light square but it does not really help. 30...♖bd8 31.♗f6+ ♖g7 32.♗xe8+ ♖xe8 33.c5 was simply bad.

31.c5 ♗g7 In case of 31...♖g7 White could have used the same idea although it was a bit more tricky: 32.♗xb8 ♖xb8 33.♗a6! bxa6 34.♖g1! e3 35.♖f1! etc.

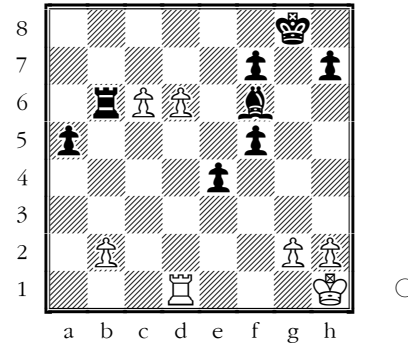
32.♗xb8 ♖xb8 (D)



33.♗a6! The bishop's whisper initiates the avalanche!

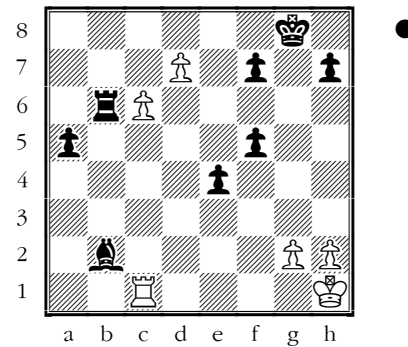
33...♗f6 34.♗xb7! ♖xb7 35.c6 White would have begun with 35.♖c1 as well.

35...♖xb6 (D)



36.♖c1! The only, but sufficient move.

36...♗xb2 37.d7 (D)



Black resigned. **1-0.**

Solutions to our Quiz:

M. Brodsky (2518) – J.Degraeve (2553)
25th Open Cappelle la Grande FRA 2009

(Can you punish White for the careless 47.♖c7-c6??)

47...f3!! 48.g3 ♖xc6 49.♖xc6 ♗c5!!
50.♖c7+ (50.♖xc5 ♖h3) 50...♖h8
51.e6 ♖h3 Mate is unavoidable so White resigned. **0-1.**

Contact information. Have some comments about Chess Today? [E-mail us](mailto:ababurin@iol.ie) – we appreciate your feedback! **Chess Today** is published by Alexander Baburin, 3 Eagle Hill, Blackrock, Co. Dublin, Ireland. Tel: (353-1) 278-2276. Fax: (353-1) 283-6839. E-mail: ababurin@iol.ie Website: <http://www.chesstoday.net> Editors: GMs Baburin, Scherbakov and Golubev. IMs Barskij, Notkin and Deviatkin. Technical editors: Graham Brown and Ralph Marconi.

Chess Today is copyright 2000-2008 by Alexander Baburin and protected intellectual property under the International Copyright convention. Subscribers are allowed to non-commercially distribute copies of Chess Today at their chess club, chess tournaments and via e-mail (on an occasional basis). Any other use and distribution (reproduction, via print, electronic format, or in any form whatsoever), as well as posting on the Web, is strictly prohibited without express written permission.