

Annotated Game

by GM Mikhail Golubev

Quite a lot of curious games are played at the European championship. Today we will look at one of the wins by the talented Russian junior, Sanan Sjugirov.

White: S. Sjugirov (2562)

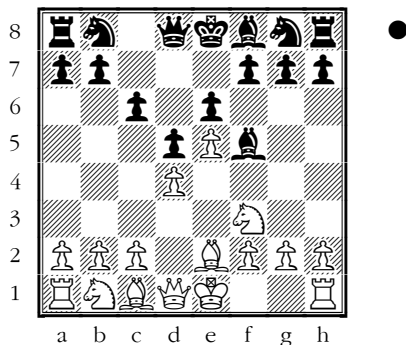
Black: I. Cheparinov (2679)

10th ch-EUR Budva MNT (2),

07.03.2009

Caro-Kann/Adv. Var. - [B12]

1.e4 c6 2.d4 d5 3.e5 Qf5 4.Qf3 e6 5.Qe2 (D)

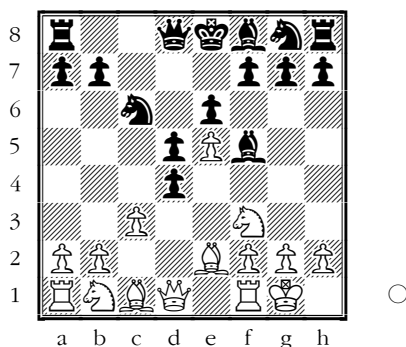


This simple setup was popularised by Nigel Short in the beginning of the 1990s and became one of the most popular lines by White in the Advance Caro-Kann.

5...c5 6.c3

Sharper continuations are 6.Qe3 (especially) and 6.0-0 - in both cases preserving the possibility to play c2-c4.

6...Qc6 7.0-0 cxd4 (D)



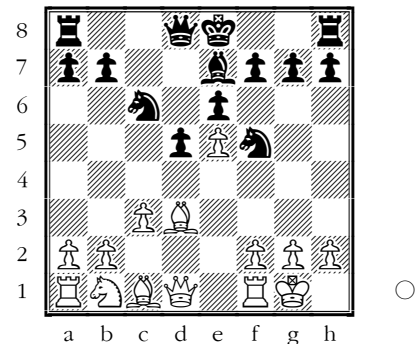
8.Qxd4!?

Introduced at GM level by Ivanchuk in Linares 1999. But 8.cxd4, as Short has often played, remains more common.

8...Qge7

Black cannot take 8...Qxe5? because of 9.Qb5+ Qd7 10.Qxf5 exf5 11.Qxd5±. Sometimes, 8...Qxd4 9.cxd4 Qe7 has been tried.

9.Qxf5 Qxf5 10.Qd3 Qe7 (D)

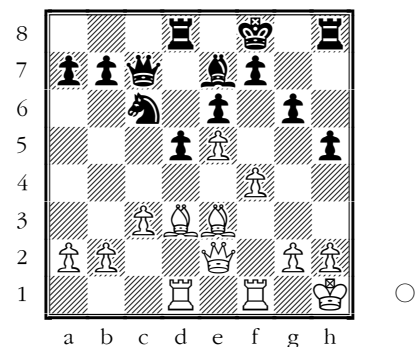


11.Qe2!?

Ivanchuk-Anand, Linares 1999 continued 11.Qe1 d4! 12.a3 (in his Informator notes to this game Ivanchuk analysed 12.Qg4! and 12.c4!?) 12...dxc3 13.Qxc3 0-0 14.Qf3 with a very slight edge for White. **11...g6 12.Qd2 h5 13.Qf3 Qh4 14.Qxh4!?**

Also possible was 14.Qd4, though after 14...Qxd4 15.cxd4 Qb6 16.Qe3 Qf5 White hardly has any significant advantage.

14...Qxh4 15.f4 Qe7 16.Qe3 Qc7 17.Qh1 Bd8 18.Bad1 Qf8 (D)



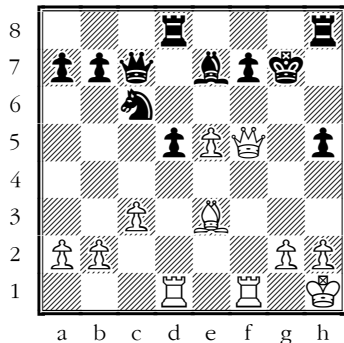
19.Qf2

White could try to prepare f4-f5 in another way: 19.Qc2! Qg7 20.Bf3, Black might have answered with 20...h4 21.Bdf1 Bh5! where the most straightforward 22.g4 hxg3 23.Bxg3 Bdh8 24.Bg2 Qf8 25.Qxg6? fxg6 26.Qxg6 is not good for White: 26...B5h6! 27.Qg7+ Qe8 28.f5 B6h7! 29.Qg6+ Qd8 30.Qxe6 Qxe5 31.Bg8+ Qc7 32.Bc8+ (32.Qf4? Bxh2+) 32...Bxc8 33.Qf4 Qxf4 34.Bxf4 Qch8=

19...♙g7 20.f5!?

A tempting sacrifice. White gets good practical chances, but no objective advantage.

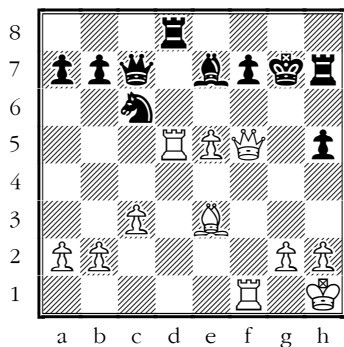
20...exf5 21.♙xf5 gxf5 22.♙xf5 (D)



22...♖h7!?

The alternative 22...♖xe5 would have led to forced play: 23.♙f4! (not 23.♙d4? f6 24.♖de1 ♗g4!± and White loses in the line 25.g3 ♖h6 26.h3 ♙xg3 27.♖xe7+ ♗h8! 28.♖e2 ♙xh3+ 29.♙g1 ♖g8 30.♖g2 ♙xg2+ 31.♙xg2 ♗e3+--+) 23...f6! (rather than 23...♙d6?! 24.♖xd5 f6 25.♙g5!, etc.) 24.♖de1 ♙d6 (Black is just a bit worse in the endgame after 24...♙d7 25.♖xe5 ♙xf5 26.♖xf5 d4) 25.♙g5! fxg5 26.♙xg5+ ♗h7 (but not 26...♗g6? 27.♖e6 ♖h6 28.♖ff6 ♖f8 29.♖xg6+ ♖xg6 30.♙xg6+ ♗h8 31.g3±) 27.♖f6 ♙g7 28.♙f5+ ♙g8= and White has only a draw by the perpetual check from the squares e6 and f5.

23.♖xd5! (D)



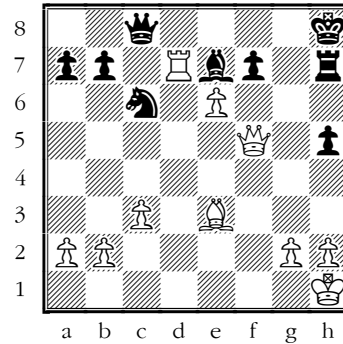
23...♙h8

Indeed, 23...♖xd5?? loses to 24.♙xf7+ ♗h8 25.♙e8+ ♙g7 26.♖f7+

24.♖fd1 ♖xd5 25.♖xd5 ♙b8

Black could try 25...h4!± with ideas like ...h3 and ...♖g7

26.♖d7 ♙c8 27.e6 (D)



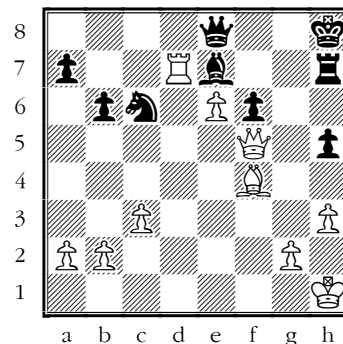
27...f6?

An overly optimistic move, after which Black's position becomes difficult. Correct was 27...fxe6 28.♙xe6 with still approximately equal chances. An illustrative line is 28...♙f8 29.♖xb7 ♖f7 30.g3 ♖f1+ 31.♙g2 ♖e1 32.♖b8! ♙xb8 33.♙h6+ ♙g8 34.♙g6+ ♙h8 (34...♙f8?? 35.♙h6#) 35.♙h6+ with a draw.]

28.h3!± b6

It was hard for Black to move. 28...♗e5? loses to 29.♖xe7 ♖xe7 30.♙xf6+--. But 28...♙g8!± was preferable.

29.♙f4 ♙e8 (D)



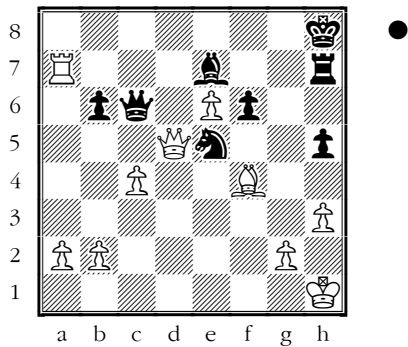
30.♙d5

Somewhat more precise could have been 30.♙e4!± (preventing activation of the black queen from g6) 30...♗e5 31.♙xe5 fxe5 32.♖xa7!±

30...♗e5 31.♖xa7 ♙c6

A better chance probably was 31...♙g6!±

32.c4± (D)



32...♖g7?

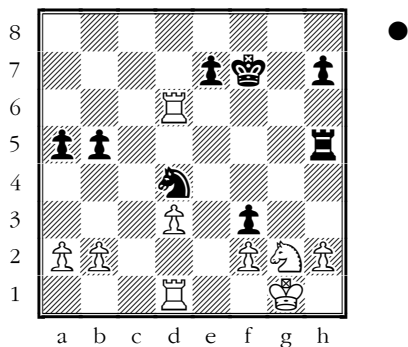
After 32...♖xd5 33.cxd5 ♔d6 34.♖a8+ ♕g7 35.♔xe5 fxe5 36.♖d8+- Black soon would have been forced to give up the bishop for the advanced white pawn. The most stubborn defence was 32...♖d6!?. After Cheparinov's move White wins on the spot.

33.♔h6!+- 1-0.

Solution to our Quiz:

M. Godena (2537) – A. Motylev (2676)

10th ch-EUR Budva MNT (7.43), 12.03.2009



37...♔e2+! 38.♕f1 38.♕h1 fxg2+ 39.♕xg2 exd6+- 38...♖xh2! 0-1.

Contact information. Have some comments about Chess Today? [E-mail us](mailto:ababurin@iol.ie) - we appreciate your feedback! **Chess Today** is published by Alexander Baburin, 3 Eagle Hill, Blackrock, Co. Dublin, Ireland. Tel: (353-1) 278-2276. Fax: (353-1) 283-6839. E-mail: ababurin@iol.ie Website: <http://www.chesstoday.net>

Editors: GMs Baburin, Scherbakov and Golubev. IMs Barskij, Notkin and Deviatkin. Technical editors: Graham Brown and Ralph Marconi.

Chess Today is copyright 2000-2008 by Alexander Baburin and protected intellectual property under the International Copyright convention. Subscribers are allowed to non-commercially distribute copies of Chess Today at their chess club, chess tournaments and via e-mail (on an occasional basis). Any other use and distribution (reproduction, via print, electronic format, or in any form whatsoever), as well as posting on the Web, is strictly prohibited without express written permission.

This issue is prepared by GM Mikhail Golubev; technical editor: Ralph Marconi

Subscription is 15 euro for 3 months. For further details please refer to <http://www.chesstoday.net>